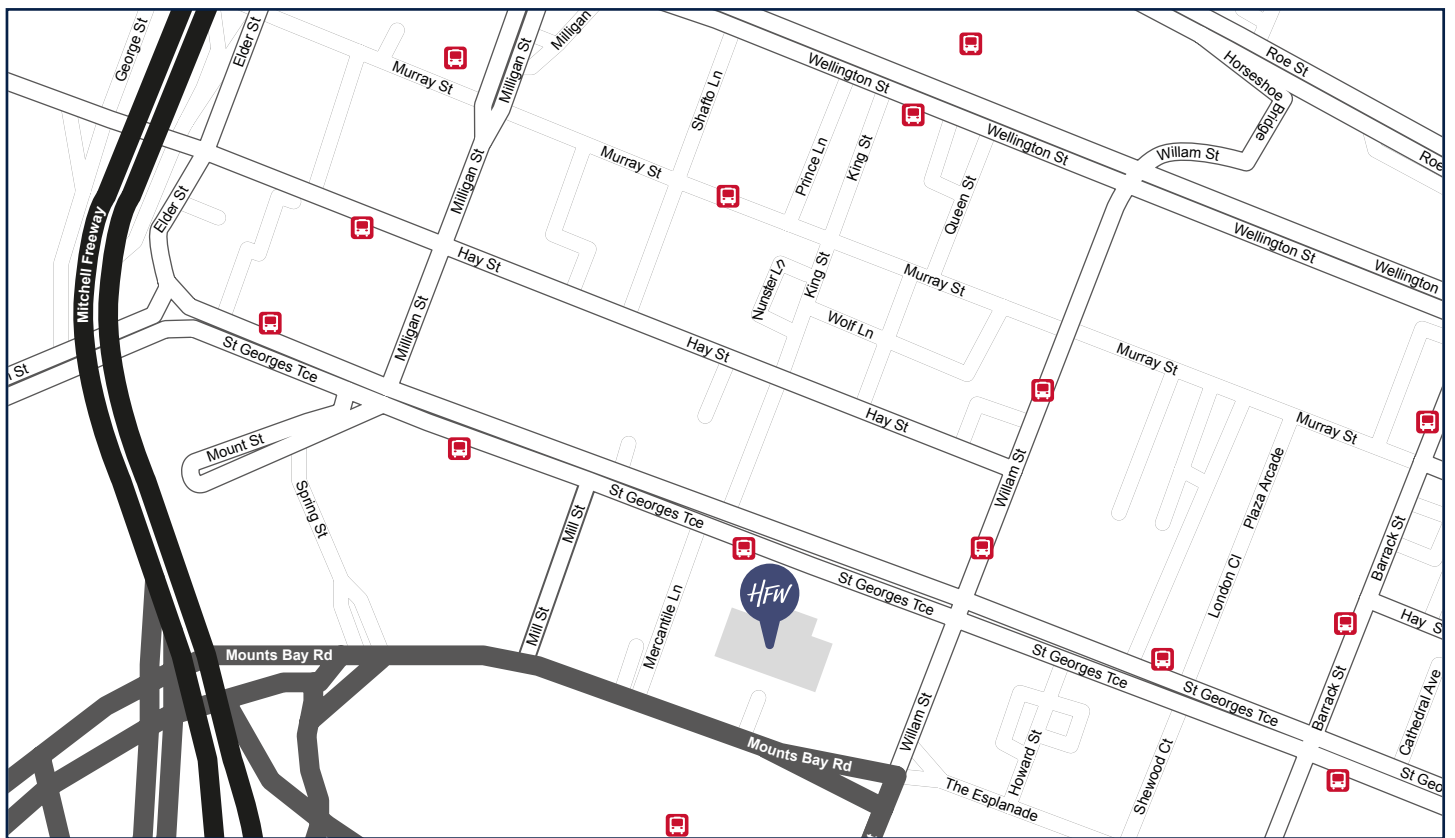
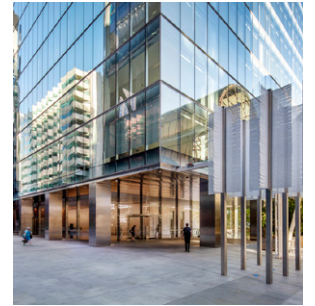


# HOW TO FIND HFW IN PERTH

Level 15  
 Brookfield Place - Tower 2  
 123 St Georges Terrace  
 Perth WA 6000  
 Australia

**T** +61 (0)8 9422 4700

**F** +61 (0)8 9422 4777



## DIRECTIONS BY PUBLIC TRANSPORT

The nearest train station is Esplanade Station. Esplanade Station runs trains to the Northern and Southern Suburbs of Perth and is the main bus depot. Perth Underground Station is a connecting station for the Northern and Southern train passengers wanting to Perth Central Station is located on Wellington Street. Perth Central Station runs trains to the Eastern and Western suburbs of Perth.

Further information can be found at [www.transperth.wa.gov.au](http://www.transperth.wa.gov.au) or call 13 62 13.

## DIRECTIONS FROM PERTH AIRPORT

### PERTH AIRPORT SHUTTLE

The Perth Airport Shuttle operates both to and from Perth Airport, the Connect shuttle buses will pick you up or drop you off right at the door of your Perth City or Fremantle accommodation.

For information and bookings, please visit [www.perthairportconnect.com.au](http://www.perthairportconnect.com.au) or call 1300 666 806.

## CAR RENTAL

If you are renting a car whilst visiting Perth, there are a number of companies that service our terminals.

Car rental company customer service desks can be found on the ground floors of the International Terminal (T1), Domestic Terminal 3 (T3). Car rental services will be coming to Domestic Terminal 2 (T2) soon. Until then the six car rental companies in T1 are able to offer a full range of services to T2 customers. T1 is a short walk from the terminal.

## **TAXI RANKS**

Covered taxi ranks are located at the International Terminal (T1) and Domestic Terminals (T2, T3 and T4).

Taxi ranks are also located along Valentine Road, serving Skippers Aviation and Cobham Aviation passengers.

Travelling from Perth Airport to Alluvion by taxi will take approximately 30 minutes and a cost of approximately \$38.00.

## **PUBLIC TRANSPORT**

Transperth operates a bus service to and from Perth Airport's Domestic Terminals 3 and 4. This bus stop is located in the bus lane, closest to Qantas Domestic Terminal.

Bus 37 operates daily between Kings Park and Domestic Terminals T3 and T4, via the Esplanade Bus Port, Victoria Park Transfer Station and Belmont Forum Shopping Centre. The journey takes approximately 55 minutes and a cost of \$4.00

Please note that Transperth does not operate bus services to Perth Airport's International Terminal 1 (T1) or Domestic Terminal 2 (T2). The Perth Airport Connect shuttle service is available for passengers who wish to travel between T1, T2, T3 and T4.

Further information can be found at [www.perthairport.com.au/ToTheAirport](http://www.perthairport.com.au/ToTheAirport)